

# 2-PAGE SPREAD - LEFT PAGE



## PUBLIC SAFETY INFORMATION

### A.1. MONITORING

Critical gauges may be accessed on the internet at [www.waterdata.usgs.gov](http://www.waterdata.usgs.gov) or [realtime.water.gov](http://realtime.water.gov). The QR codes presented at the right and below can be scanned on a mobile device with any QR code scanning application to link the user directly to the web addresses shown above. Individual live gauge charts can be accessed via the QR codes below, while the USGS Mobile Water Data web application can be accessed via the QR code to the right.

USGS Mobile Water Data



**LIVE CHART**  
**AT1C1**  
 Antioch  
 Sacramento-San Joaquin Delta  
 gage  
 NAD83/WGS84  
 LOCATION  
 38.021778, 121.813006

**LIVE CHART**  
**OS1C1**  
 Franklin Tract, Terminus  
 Old River  
 gage  
 NAD83/WGS84  
 LOCATION  
 38.071313, 121.576886

**LIVE CHART**  
**DEK1C1**  
 Decatur Island  
 Sacramento River  
 gage  
 NAD83/WGS84  
 LOCATION  
 38.093333, 121.754111

**LIVE CHART**  
**RVBC1**  
 Rio Vista Bridge  
 Sacramento River  
 gage  
 NAD83/WGS84  
 LOCATION  
 38.329722, -121.511111

**LIVE CHART**  
**ML1C1**  
 Millerton Island  
 Sacramento-San Joaquin Delta  
 gage  
 NAD83/WGS84  
 LOCATION  
 38.042778, 121.92

**LIVE CHART**  
**SAC1C1**  
 Sacramento River  
 gage  
 NAD83/WGS84  
 LOCATION  
 38.042778, 121.92

### B.1. STAGING AREAS

The following sites have been identified for use as staging areas for incoming resources.

**FLOOD FIGHT STAGING**  
 The staging area would be located near the district headquarters.  
 38 02 38.35288N, 121 41 31.50929W

### B.2. SUPPLY DELIVERY LOCATIONS

The following sites have been identified for use as supply delivery points for incoming resources.

NO KNOWN STAGING AREAS IN MAP EXTENT

### C.1. COMMUNICATIONS SUPPORT

COUNTY OFFICES

**CONTRA COSTA COUNTY SHERIFF'S OFFICE/DEPARTMENT**  
 Evacuation  
 925.333.1500, Information  
 925.646.2541, Emergency

**CONTRA COSTA COUNTY FIRE PROTECTION DISTRICT**  
 Evacuation/Rescue  
 925.941.3030

**CONTRA COSTA COUNTY PUBLIC WORKS DEPARTMENT**  
 Debris Management  
 925.313.2000

**CONTRA COSTA COUNTY PUBLIC WORKS DEPARTMENT**  
 Debris Management  
 925.313.2000

COUNTY ICS/EOC OPS

**CONTRA COSTA COUNTY**  
 925.646.4461, Office  
 925.228.5000, 24-Hour

**SAN JOAQUIN COUNTY**  
 209.953.6200, Office,  
 209.468.4400 Emergency

**YOLO COUNTY**  
 530.406.8050, Office  
 530.466.8820 24 Hour

**SACRAMENTO COUNTY**  
 916.876.4870, Office  
 916.875.5000, Night  
 916.875.6600, Night

**SOLANO COUNTY**  
 707.784.1800, Office  
 707.421.2900, Night

RESPONSE SUPPORT

**AMERICAN RED CROSS**  
 Sheltering  
 800.793.3767

**DWR STATE-FEDERAL FLOOD OPERATIONS CENTER**  
 Support  
 Coordination/ice  
 Support  
 800.952.5030

**CALTRANS**  
 Evacuation/Bridge  
 Support  
 916.454.3853

**CALIFORNIA CONSERVATION CORPS**  
 Environmental/ Disaster Response  
 916.341.3100

LMA CONTACTS

**BULLER TRACT (RD 2124)**  
 Tom Bloomfield  
 925.550.2540

**DUTCH SLOUGH (RD 2137)**  
 Nave Hershay  
 916.438.4400

**PALM ORCHARD TRACT (RD 2024)**  
 Dianne Nonell/Inl  
 209.465.5883, Bus.  
 809.969.7755, Bus Cell

**BIMID (RD 2137)**  
 AJ Warren Haddatt  
 209.943.5531, Bus.  
 809.969.7755, Bus Cell

**HOLLAND TRACT (RD 2025)**  
 David A. Puskal  
 925.837.8153  
 Bus. 925.683.9777  
 Bus Cell

**QUIMBY ISLAND (RD 2090)**  
 AJ Warren Haddatt  
 209.943.5531, Bus.

**BRADFORD ISLAND (RD 2058)**  
 Economic Coll  
 209.478.6025  
 Bus. 209.649.4555, Bus. Cell

**HOTCHKISS TRACT (RD 799)**  
 Angella Tant  
 925.684.2298 Bus.  
 925.580.5566, Bus. Cell

**VEALE TRACT (RD 2085)**  
 Dianne Nonell/Inl  
 209.465.5883, Bus.  
 809.969.7755, Bus Cell

**BYRON TRACT (RD 800)**  
 Jeff Conway  
 925.348.8542 Bus.

**JERSEY ISLAND (RD 830)**  
 Denise Noah  
 925.805.2279, Bus.

**WEBB TRACT (RD 2026)**  
 AJ Warren Haddatt  
 209.943.5531, Bus.

**COONEY ISLAND (RD 2117)**  
 Dianne Nonell/Inl  
 209.465.5883, Bus.  
 809.969.7755, Bus. Cell

**WINTER ISLAND (RD 2122)**  
 Robert Calmer  
 925.492.3300

### A.2. PATROL TRIGGERS



## PATROL TRIGGER

**SAC1C1**  
 see inset

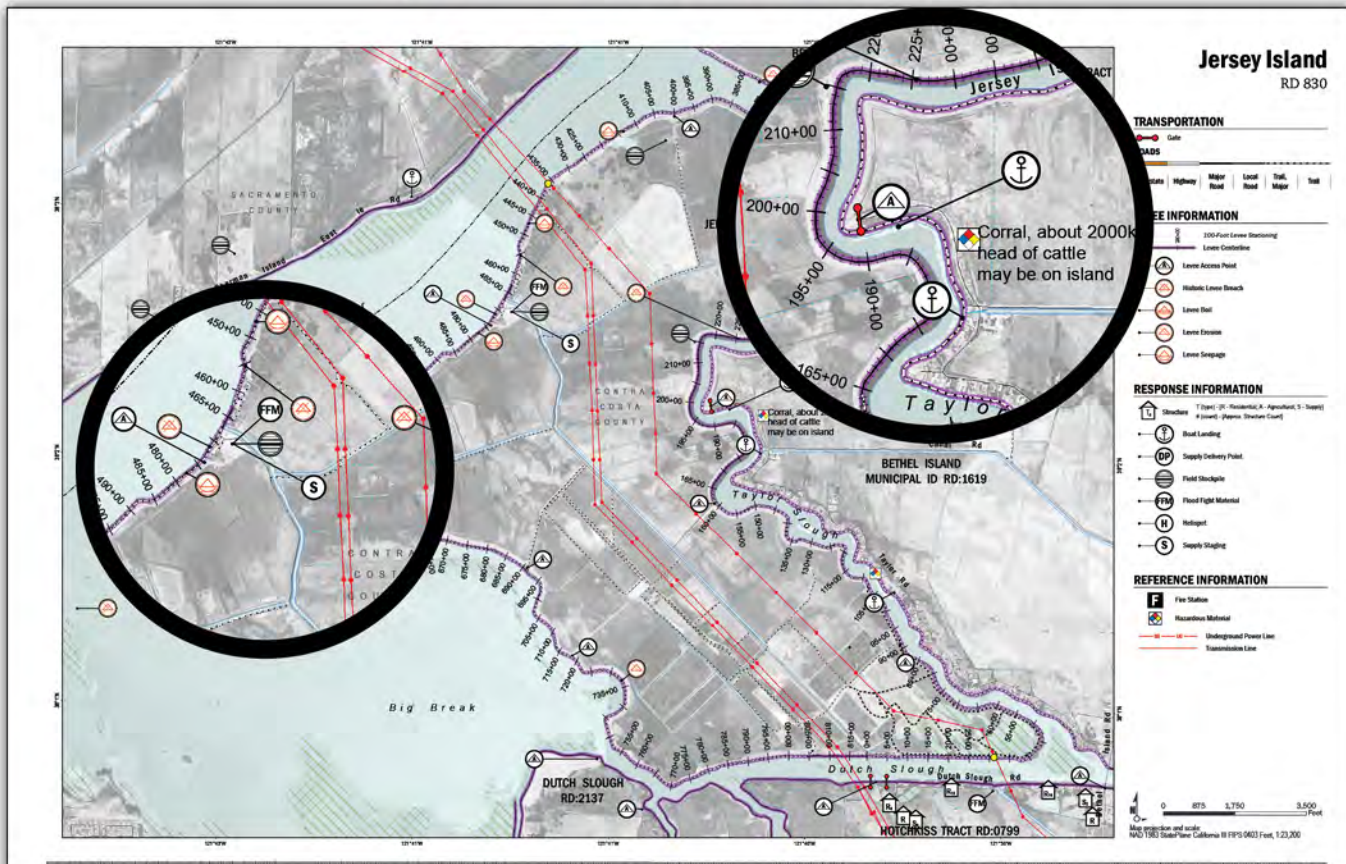
**RVBC1**  
 Rio Vista Bridge  
 Sacramento River

**21.4' Major Flood**  
**20.4' Moderate Flood**  
**11.9' Minor Flood**  
**7.4' Active Flood**

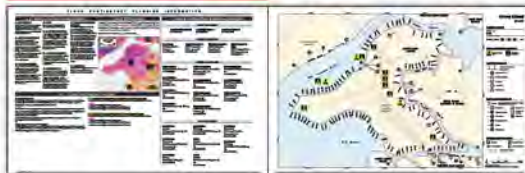
### HAZMAT LOCATIONS

The following sites have been identified as containing hazardous materials.  
 NO KNOWN HAZMAT LOCATIONS IN MAP EXTENT

# 2-PAGE SPREAD - RIGHT PAGE







## FLOOD CONTINGENCY PLANNING INFORMATION

### A.1. SPECIAL FLOOD CONSIDERATIONS

#### J1. PUMP STATION 1

Located near station 467+00, these discharge pumps may be utilized during a major flood event, however additional pumps would be required to dewater the island.

#### J2. UTILITY INFRASTRUCTURE

Two electrical transmission lines run parallel to western side of Jersey Island Road (Puls 19 Connector) and cross the perimeter levee east of Jersey Island Road Bridge. Another transmission line runs to the east side of Jersey Island Road and crosses the perimeter levee at the confluence of Dutch and Taylor Slough.

#### J3. LEVEE IMPROVEMENTS

West barn of Jersey Island at the confluence of San Joaquin River and Dutch Slough has undergone levee stability improvements. Improvements include splash berm located south of western barn on Jersey Island. Minimum width of splash berm range appears from 16 FT to 64 FT.

#### J4. SLOPE

General slope characteristic is toward the center of the island.

#### J5. UTILITY INFRASTRUCTURE

Major utility crossings exist in this area. Utility crossings including three sets of high power electrical lines (PG&E and WAPA), and one 42-INCH high pressure gas main. Coordinate with local county O&E office in the event that utilities crews are needed.

#### J6. EVACUATION CONCERNS

In major levee breach and resulting large scale flood event, have all personnel and equipment evacuate to high ground, most commonly the levee crown.

#### J7. DISEASE CONTROL

There are 220 head of cattle on the island at all times. During a flood many head of cattle could become trapped and/or perish. Animal carcass management is a concern for disease control. Coordinate with the California Department of Food and Agriculture through the local county O&E for disposal methods.

### J8. FLOOD FIGHT PERSONNEL/MATERIALS

On site flood fight personnel are maintained through the RD HQ. Personnel have knowledge of in-place standard operating procedures based on daily conditions, schedule, etc. RD HQ has capability to maintain 24/7 levee patrol and preventative preparation in advance of storm. The district maintains stockpiles of riprap on the island and has equipment available to perform levee maintenance and repairs. 20 cubic yards of sand is stored under the barn at headquarters. If a storm event is predicted, 6 cubic yards is placed in a dump truck as it is mobile.

#### J9. WAVE RUN-UP

Along the San Joaquin River, storms from a southeast direction can create 6" to 5' waves along river.

The general elevation ranges are shown by shading within the levee maintenance area below. General areas of high ground and low ground are shown from the mapping presented below. Long dike, as a best defense, could result in extreme flood depths. Flood depths may also be significantly greater in depressions such as channels or road cuts or near to obstructions such as reduced embankments. Flood depths may also be significantly less, depending on individual variations to terrain or where structures are raised above general ground elevations.

MAP DATA SOURCE: DEIMS Risk Report (CDS/JFA 2008)



### C. REPAIR CONTRACTORS & MATERIAL SUPPLIERS

FLOOD FIGHT LABOR		
Labor Ready Sacramento 916.874.9501	Labor Ready Concord 925.827.2352	Labor Ready Oakland 510.981.8226

REPAIR CONTRACTORS			
Dutra Group 160 River Rd, Rio Vista, CA 707.874.5127	Teichert Construction 24207 County Rd 100A, Davis, CA 530.406.4200	Teichert Construction 4401 Duluth Ave, Roseville, CA 916.645.4800	Teichert Corporate Office 3500 American River Dr, Sacramento, CA 916.484.3011

MATERIALS SUPPLIERS		
Dutra Materials 615 River Rd, Rio Vista, CA 707.374.6964	Teichert Aggregates 4249 Hammonnton Smartville Rd, Marysville, CA 530.743.6111	Teichert Aggregates 8760 Kiefer Blvd, Sacramento, CA 916.386.8905

Dutra Materials 1900 Point San Pedro Rd, San Francisco, CA 415.439.7740	Teichert Aggregates 2831 Walnut Ave, Marysville, CA 530.749.1230	Teichert Aggregates 33030 Country Rd 20, Woodland, CA 530.661.4290
---	--	--

Industries 10000 Highway 99, Esparto, CA 530.749.1230	Teichert Aggregates 3417 Grant Line Rd, Rancho Cordova, CA 916.351.0123	Teichert Ready Mix 8950 Cal Center Dr, #165, Sacramento, CA 916.361.5069
---	---	--

Industries 10000 Highway 99, Esparto, CA 530.749.1230	Teichert Aggregates 13333 White Rock Rd, Rancho Cordova, CA 916.985.2052
---	--

HEAVY EQUIPMENT		
Ace Hardware Pittsburg 125 E Leland Rd, Pittsburg, CA 925.432.6089	Home Depot Brentwood 5631 Lone Tree Way, Brentwood, CA 925.513.6060	
Ace Hardware Brentwood 6900 Brentwood Blvd, Ste J, Brentwood, CA 925.634.3201	Home Depot Pittsburg 2300 N Park Blvd, Pittsburg, CA 925.473.1900	
Ace Hardware Oakley 305 5th St, Oakley, CA 925.825.2449	Low's Antioch 1551 Antio Center Dr, Antioch, CA 925.756.0370	
	Low's Antioch 5503 Lone Tree Way, Antioch, CA 925.779.6040	

### B.1. FLOOD CONTINGENCY OPTIONS

#### J1. HIGH WATER EVENT

Multiple high water events caused by large volumes of discharge from regional and local drainage system, coupled with tides and low atmospheric pressure, vulnerable area approx. 3,000 FT. The district will or temporary earthen levee is recommended.

#### ACTIONS

The district maintains stockpiles of riprap on the island and has equipment available to perform levee maintenance and repairs. 20 cubic yards of sand is stored under the barn at headquarters if a storm event is predicted. 6 cubic yards is placed in a dump truck as it is mobile.

#### Muscle Wall Material Required:

5000 feet of temporary levee will require approximately 834 segments of muscle wall, 8340 sandbags, and 4170 cubic feet of sand.

#### OR

Temporary Earthen Levee Material Required:

5000 feet of temporary earthen levee (24" high x 48" wide) will require approximately 200 rolls of 10' and plastic sheeting, 1500 sandbags, and 225 cubic yards of fill. Approximately 27.6 cubic yards of fill are sand bags and 197.2 cubic yards of fill for viapages fill.

#### J2 - FAILURE OF SAN JOAQUIN RIVER DIKE

This scenario will lead to flooding of Jersey Island.

#### ACTIONS

1. Prepare to floodfight District Headquarters
2. Shut down natural gas well heads at north
3. Shut down natural gas well heads at south

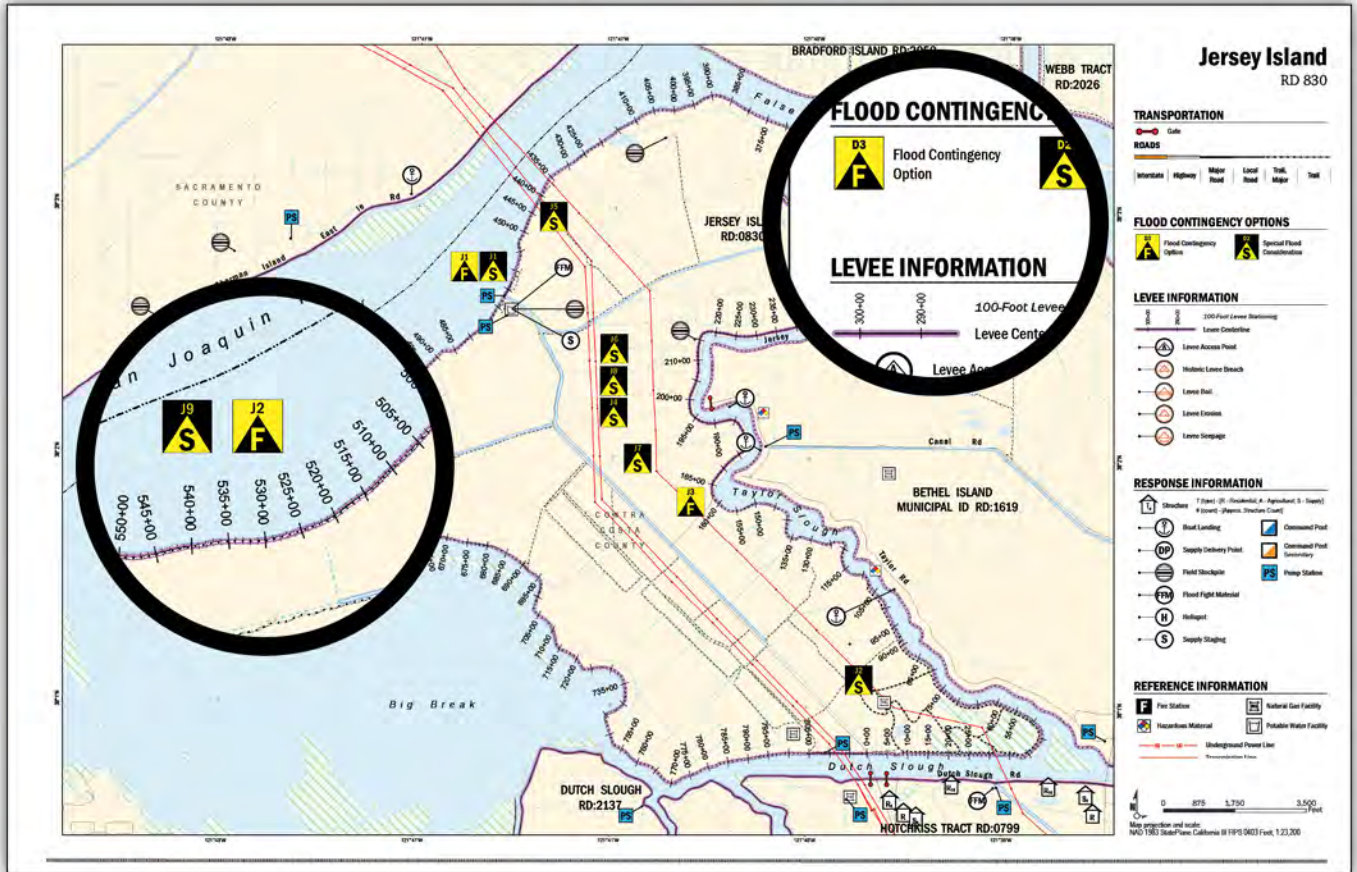
#### J3 - FAILURE OF TAYLOR SLOUGH LEVEE

This scenario will lead to flooding of Jersey Island.

#### ACTIONS

1. Prepare to floodfight District Headquarters
2. Shut down natural gas well heads at north
3. Shut down natural gas well heads at south

# 2-PAGE SPREAD - RIGHT PAGE



## Jersey Island RD 830

### TRANSPORTATION

- Gate
- ROADS
  - Interstate
  - Highway
  - Major Road
  - Local Road
  - Trail
  - Trail

### FLOOD CONTINGENCY OPTIONS

- Flood Contingency Option
- Special Flood Contingency

### LEVEE INFORMATION

- 100-Foot Levee
- Levee Centerline
- Levee Access Point
- Historic Levee Breach
- Levee Easement
- Levee Easement
- Levee Storage

### RESPONSE INFORMATION

- Schedule 7 (Type) (E - Electrical, A - Agricultural, S - Storm) (F - Fire) (Hazardous Material Control)
- Boat Landing
- Supply Delivery Point
- Field Storage
- Flood Fight Material
- Hilltop
- Supply Staging
- Command Post
- Command Post
- Pump Station
- Pump Station

### REFERENCE INFORMATION

- Fire Station
- Hazardous Material
- National Gas Facility
- Public Water Facility
- Underground Power Line
- Underground Power Line

